

---

*Maple Ridge  
Community  
Credit Union*

*1987 Calendar*

1947  1987

*40th Anniversary Edition*

---





*Port Haney from the air,  
c. 1947*

*Photograph courtesy of  
Jim Hadgkiss*



**Maple Ridge Community Credit Union**





Lougheed Highway looking east,  
c. 1951

Photograph courtesy of  
Fuller Watson Ltd.



**Maple Ridge Community Credit Union**



Aerial view of Haney  
from the southeast, c. 1961  
Open Field — Now Valley Fair Mall

Photograph by  
L. R. McGregor



**Maple Ridge Community Credit Union**



Haney Post Office,  
c. 1951



**Maple Ridge Community Credit Union**

Photograph courtesy of  
Donald E. Waite Archives,  
Maple Ridge, B.C.



Looking west down  
Lougheed Highway from 224th Street,  
c. 1951

Photograph courtesy of  
Maple Ridge Museum & Archives



**Maple Ridge Community Credit Union**

Miss Pitt Meadows Day Friday May 30, 1947.



Jean Stöppler, Elizabeth Sharpe, Jeannette Anderson, Mary Vayda, Verlie Dale  
Betty Froese, May Duff, Linda Freiheit, Reta Kvaas, Jean Smith, Leona Streifel, Donna Anderson,  
Verona Groome, Jean Anderson, George Doerksen, Sheldon Lebman.

Miss Pitt Meadows Day  
Friday May 30, 1947



**Maple Ridge Community Credit Union**

Photograph courtesy of  
Pitt Meadows  
Heritage & Museum Society





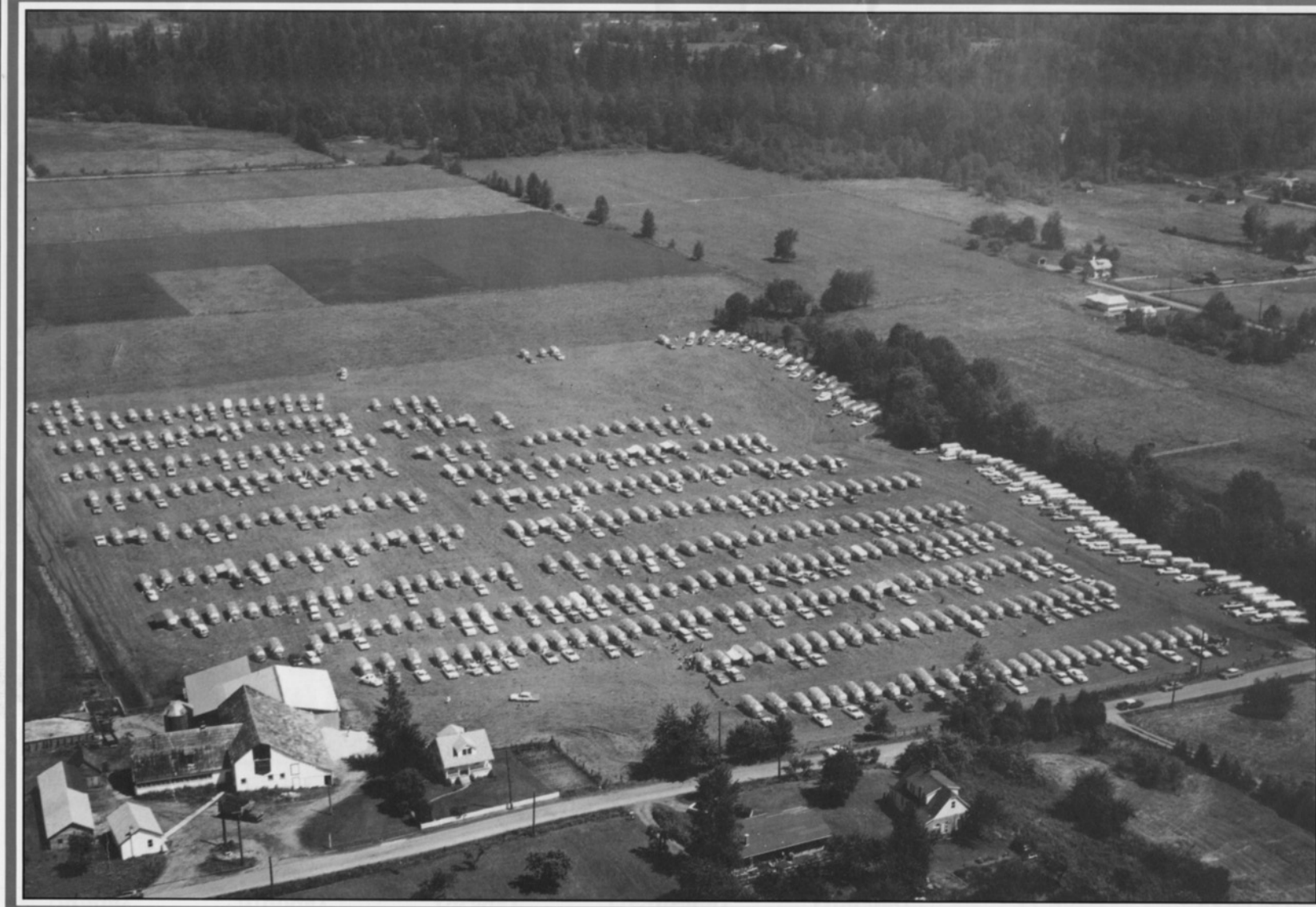
Maple Ridge High School,  
Haney, c. 1951



**Maple Ridge Community Credit Union**

Photograph courtesy of  
Donald E. Waite Archives,  
Maple Ridge, B.C.





The Wally Byam  
"Airstream Trailer" Caravan  
George Davison's Farm, July 7, 1962



**Maple Ridge Community Credit Union**

Photograph by  
L. R. McGregor



*Davison's Pool, c. 1953  
Popular swimming hole upstream  
(east) of Maple Ridge Park.*

*Photograph by  
L. R. McGregor*



**Maple Ridge Community Credit Union**



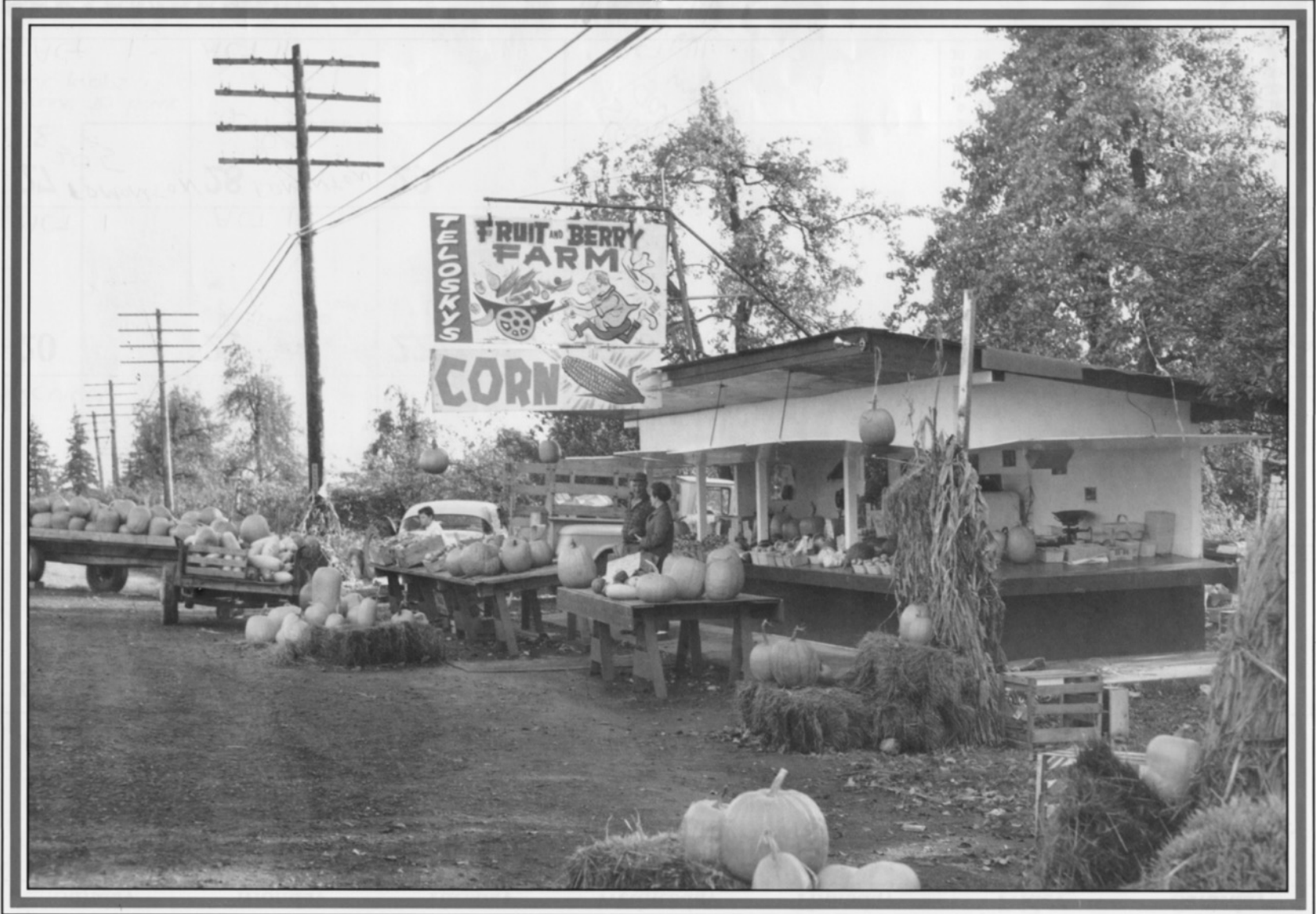
Whonnock School, October, 1947  
Located on 100th Avenue  
and 272nd Street, Whonnock, B.C.



**Maple Ridge Community Credit Union**

Photograph courtesy of  
Maple Ridge Museum & Archives





Telosky's fruit and berry stand, c. 1957  
Located across from present Telosky Stadium.  
Pete Telosky with customer.

Photograph by  
L. R. McGregor



**Maple Ridge Community Credit Union**



Lougheed Highway looking west,  
c. 1951

Photograph courtesy of  
Fuller Watson Ltd.



**Maple Ridge Community Credit Union**



*Haney Hotel, Haney, B. C.*

Haney Hotel, c. 1951  
Notice the separate entrances.



**Maple Ridge Community Credit Union**

Photograph courtesy of  
Donald E. Waite Archives,  
Maple Ridge, B.C.





# Maple Ridge Community Credit Union

## Maple Ridge Community Credit Union

*Head Office/Main Branch*  
22565 Lougheed Highway  
Maple Ridge, B.C. V2X 7E9  
Telephone: 463-8821

*General Manager* ..... Brian Elliott  
*Controller* ..... Brian Mann  
*Member Service Manager* ..... Denis Casavant  
*Loans Manager* ..... Ken Brown  
*Accountant* ..... Munro Cooper  
*Commercial Loans Officer* ..... James Madhavan  
*Marketing Co-ordinator* ..... Ron Jacobson

### Member Services

#### Savings

- Shares
- Plan 24
- Special Savings
- Term Deposits
- Registered Retirement Savings Plans

#### Daily Interest Chequing

- Personal
- Business
- Community Benefits
- U.S. Dollar

#### Golden Account

- Special privileges for members 55 and better
- Term Certain Annuities (65 and better)

#### Loans

- Personal
- Line of Credit
- Mortgages
- Business

#### Automated Teller Machines (ATM)

- CUE/STRATA Network provides 24 hour teller service throughout B.C. and beyond

## Maple Ridge Community Credit Union

*Pitt Meadows Branch*  
12163 Harris Road  
P.O. Box 574  
Pitt Meadows, B.C. V0M 1P0  
Telephone: 465-8971

*Branch Manager* ..... Dean Stewart

10:00 - 5:30 Tuesday to Thursday  
10:00 - 6:00 Friday  
10:00 - 3:00 Saturday

#### MasterCard

- MasterPlan
- MasterCard Merchant Deposits

#### Insurance

- Term Life
- Home Security
- Sickness and Accident
- Family Protection

#### Other Services

- Safety Deposit Boxes
- Traveler's Cheques
- Money Orders and Drafts
- Night Depository
- Payment of Utility Bills
- Payment of Property Taxes
- Collection of Agreements for Sale and Mortgages
- Canada Savings Bonds
- Financial Counselling
- Provision for wills and estate planning (through Co-operative Trust)
- Direct deposit of Old Age Pension, Canada Pension and other cheques

## A Brief Look Back

Maple Ridge Community Credit Union was brought into being on Monday, March 24th, 1947, by a group of individuals wishing to form a credit union. There were fourteen original members — eleven farmers, a government inspector, a mechanic, and a printer. All firmly believed in the credit union philosophy of "people helping people". Total assets of the Credit Union at the end of 1947 were a whopping \$1,492.

Maple Ridge Community Credit Union has grown substantially in the last few years. During its first 25 years, assets reached almost \$2 million. In 1986, assets passed the \$100 million plateau and are still climbing.

After 40 years of service, MRCCU is proud to be able to offer a full service financial institution that is in tune with the needs of its membership. We look forward to serving the financial needs of our communities for many more years to come.

NOTE:

The Calendar started December 1986  
Hence 13 Pictures